

Relational Scheduling

This program allows you to accurately space out the scheduling of two separate jobs for a customer. This ensures that you do not perform a second task too close to the first task. (You do not want to perform Round 2 if Round 1 was performed within the last week or so.)

Preparation Procedure

In the Custom Letters field of each JOB RECORD, enter a code or value that is unique to that type of job. For example, you might enter "R1" in the JOB Record Custom Letters field for each first round application, then "R2" for each second round. Each code must be exactly the same for each job in a given round, including upper and lower case. Each code must also be unique to the round, and cannot appear in the custom letters field of any other job records. Following the example, you would edit each job record that represents a round two application for every customer so that "R2" is in the custom letters field. The code "R2" cannot appear in the custom letters field of any other job record, except the round two records you just modified.

Note:

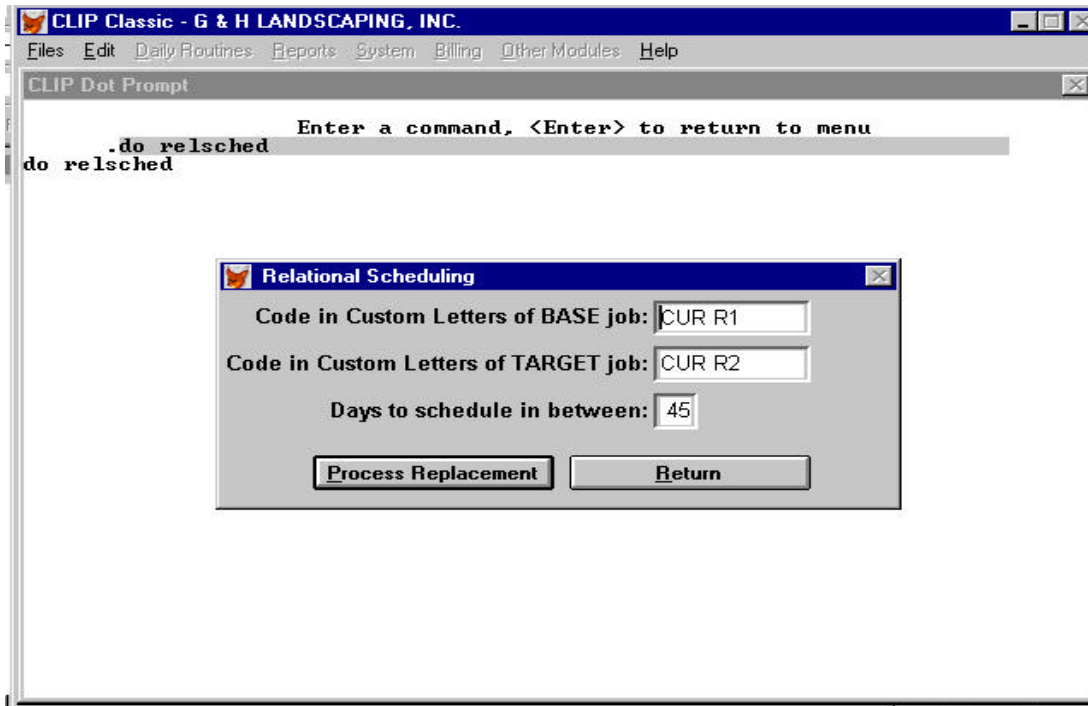
Relsched is designed to work only if the custom letters match exactly (upper and lower case) and if the done to date on the base job equals 1 and the target job equals 0 This is attained by setting all your done to dates back to zero at the beginning of the season. . (see Global Replacement documentation) If the done to date is not 1 in the base job, relsched will not reschedule the target job.

Implementation Procedure

Backup your *CLIP* system -- **IMPORTANT!!** .

From the *CLIP* Main Menu, Files section, select "Other Utilities".

From the Other Utilities menu, select "Dot Prompt". On the Command Line, type "**DO RELSCHED**". (see example below)



You will be presented with a menu that will allow you to enter the code for the round that you have completed, the round that you want scheduled, and the minimum number of days you want between the two rounds. Note that this requires that the previous round was completed and posted. Also, the number of days you specify is absolute. The re-scheduling will not use the day of week field in the Job record.

When you have completed and checked your entry, press <Enter>. *CLIP* will now schedule the next round with the minimum number of days separation you specified.

Press <Esc> until you are back at the *CLIP* Main Menu. Your scheduling of your next round is complete.